

---

# Exchanger XML Editor - Using WSDL

Copyright © 2005 Cladonia Ltd

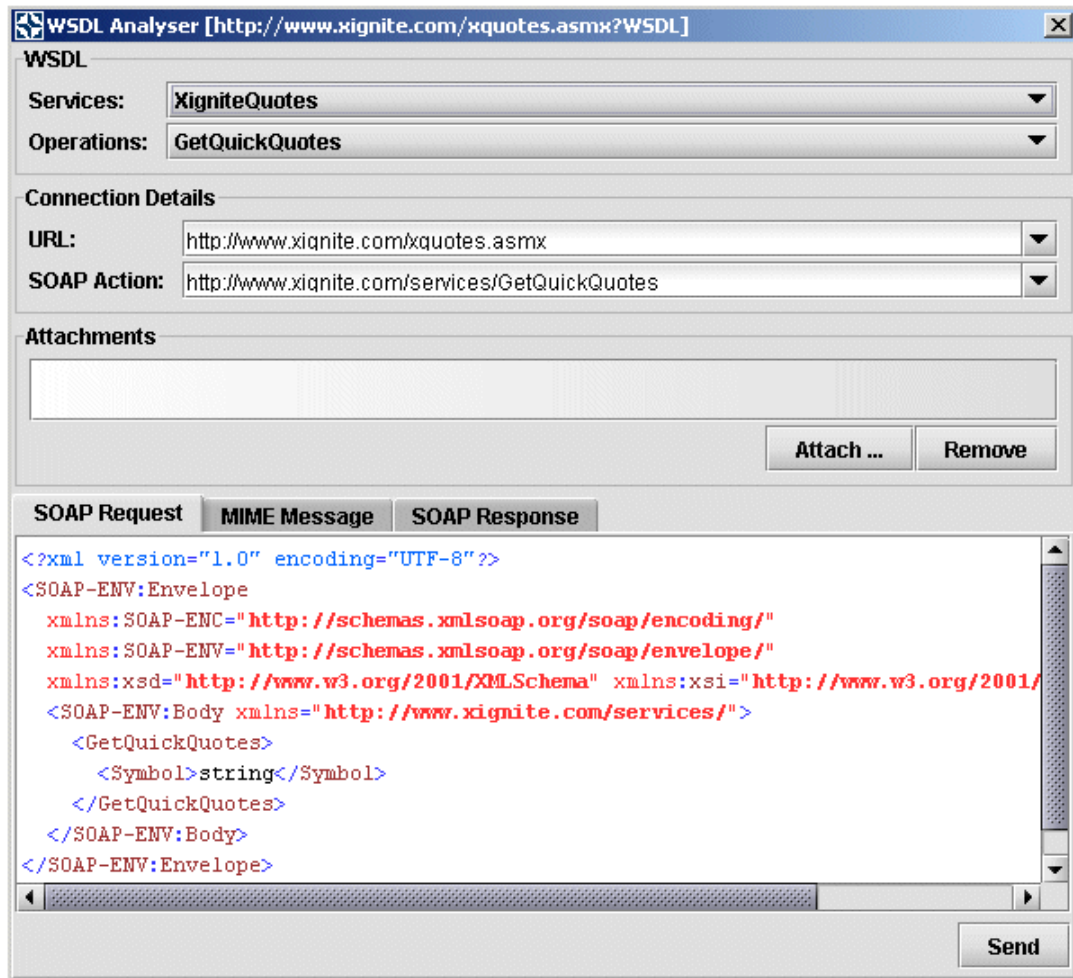
## Table of Contents

WSDL Analyser .....	2
Exchanger XML Editor - Using WSDL	

# WSDL Analyser

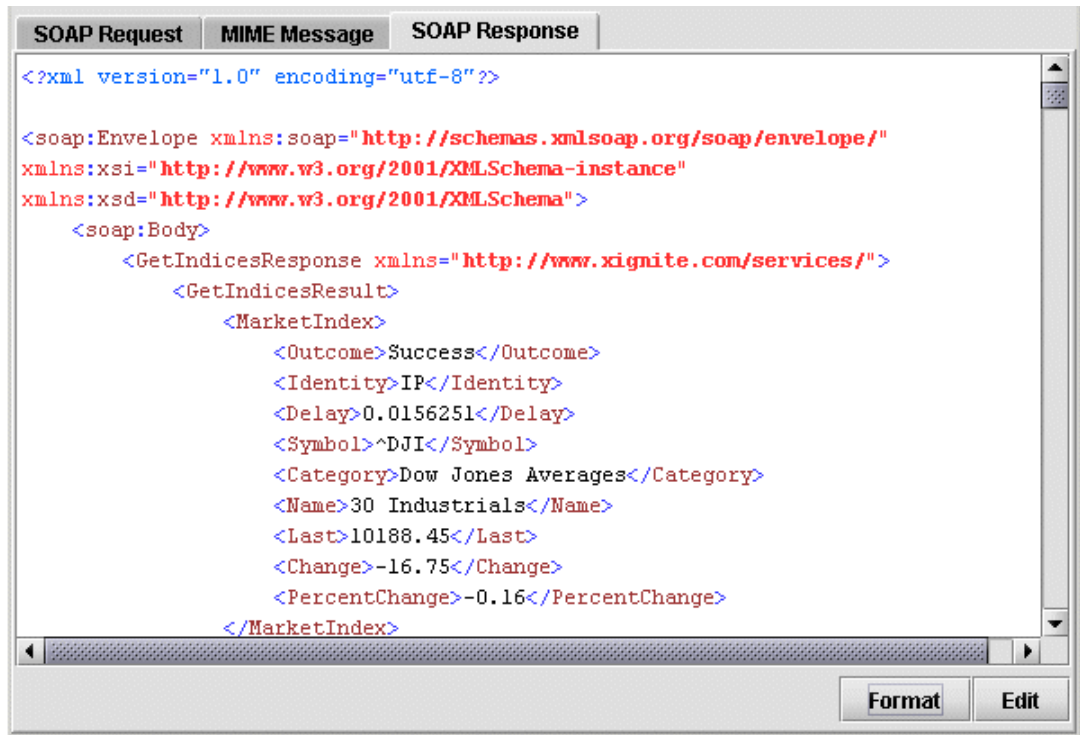
Exchanger XML Editor provides a tool for analyzing a Web Services Description Language (WSDL) document and generating appropriate SOAP requests for invoking operations described in the document.

Open the **Stock Quote WSDL** project and in the **wsdl** folder, open the remote file <http://www.xignite.com/xquotes.asmx?WSDL> (or alternatively, open the local copy of this file, named **local.wsdl**). Now select **Tools->Analyse WSDL** and choose **From Current Document** in the dialog.



**Figure 1. WSDL Analyzer**

The WSDL file will be analysed and you will be presented with a dialog displaying the information relating to the Services and Operations available, the connection details including URL and SOAP Action (if any) and a sample SOAP message in the SOAP Request tab. In the Operations drop down menu, navigate to the end and choose the **GetIndices** operation and press **Send**.



**Figure 2. WSDL GetIndices SOAP Response**

The information returned from the web service (in this case a summary of the Nasdaq and NYSE stock indices) will be displayed in the SOAP Response tab. Press the **Format** button to make the response easier to read and press the **Edit** button if you would like to use the data inside the editor.

To see how to call a web service where an input is required, select the **GetQuote** operation and notice how in the SOAP Request, there is a <Symbol> tag with the content "string". Replace this content with a symbol, say, **IBM** press **Send**. The SOAP Response should display the current stock price for IBM (or, if the markets are closed, the previous closing price).