

---

# Exchanger XML Editor - Windows Overview

Copyright © 2005 Cladonia Ltd

## Table of Contents

Window Overview .....	2
Exchanger XML .....	2
Projects .....	3
Navigator .....	4
Element and Attribute Helpers .....	6
Editor .....	7
Grid .....	8
XSLT Debugger .....	9
Unordered XML Differencing and Merge .....	10
Viewer .....	11
Schema Viewer .....	12
Outliner .....	13
Output Window .....	14

Exchanger XML Editor - Windows Overview

# Window Overview

## Exchanger XML

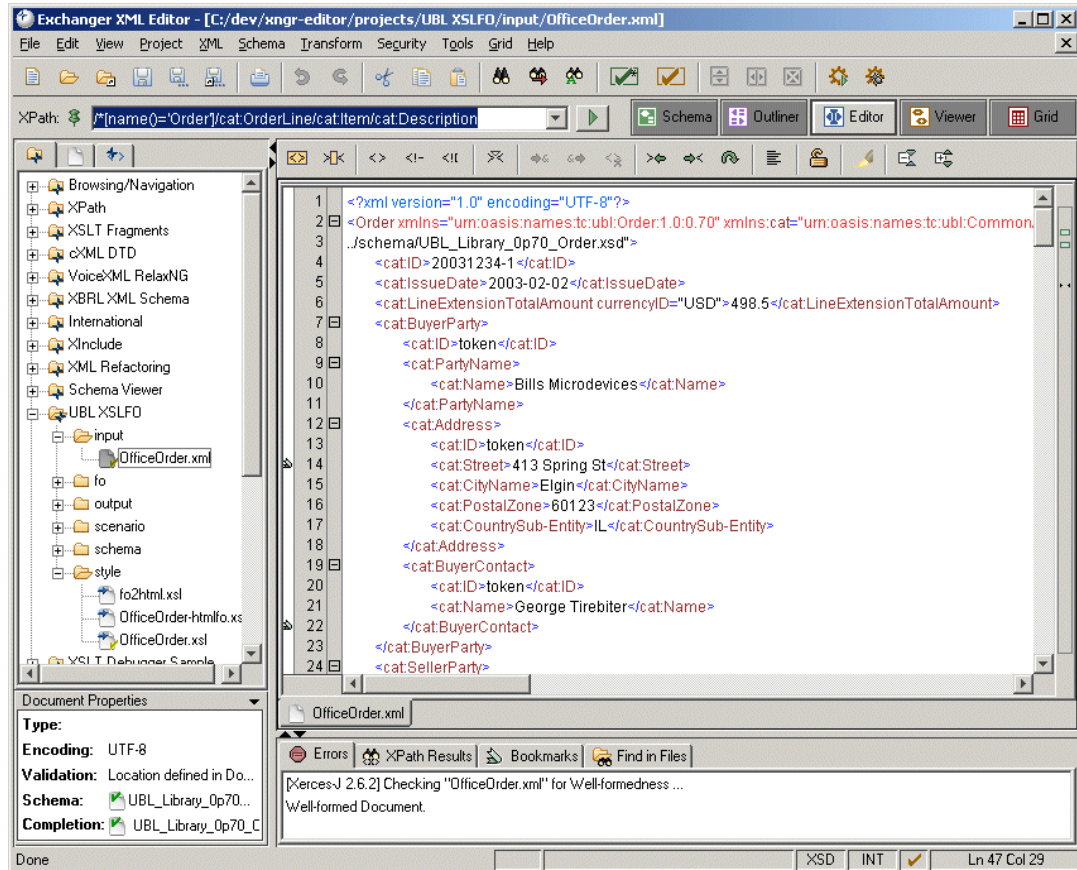


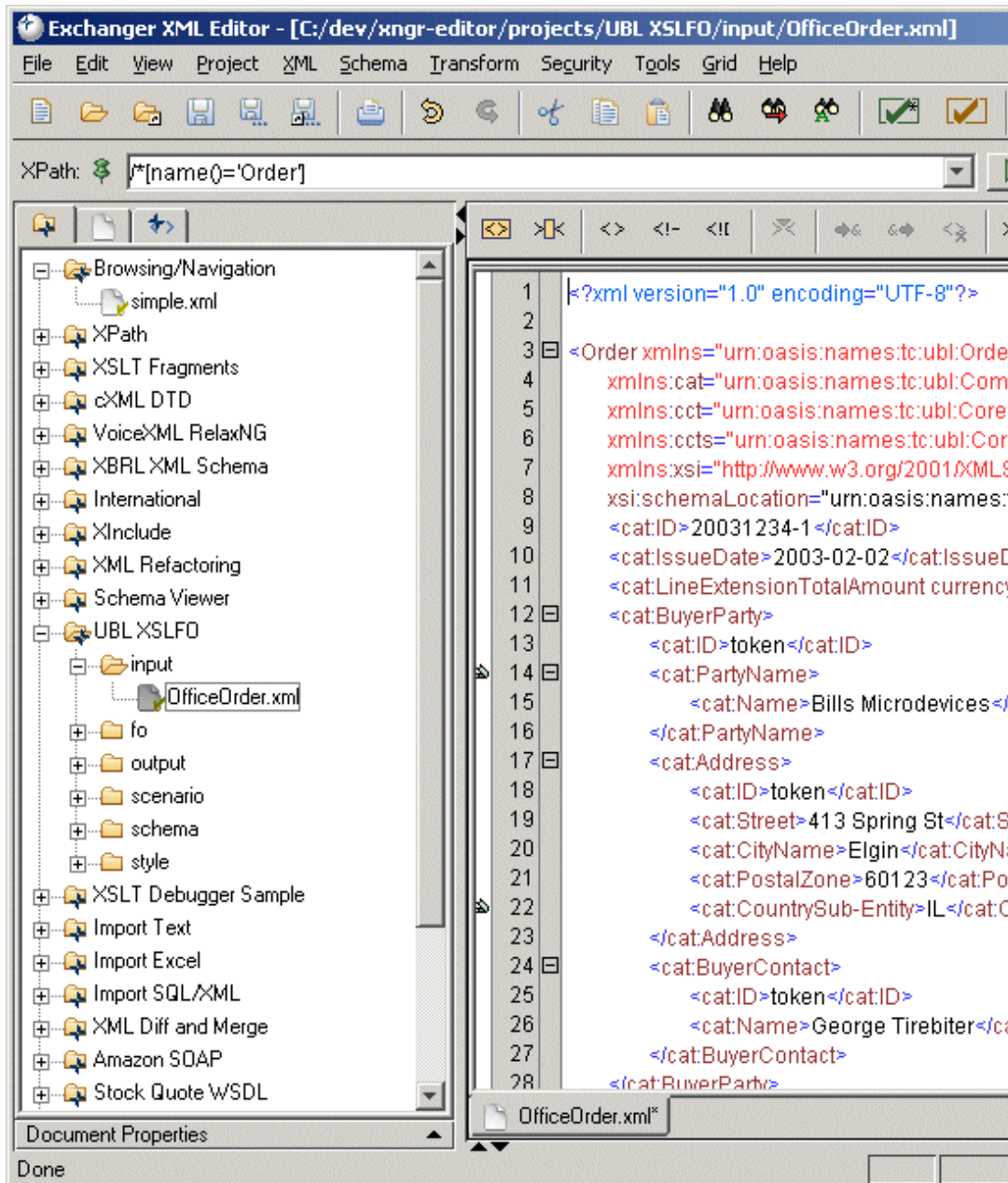
Figure 1. Exchanger XML

The Exchanger XML Editor consists of 3 windows

- The Main Window which usually contains the Editor View, but can also display a Tree Viewer, an Outliner for tag-free data entry and a Schema Viewer for visualizing the XML Schema associated with the open XML file.
- The Output Window (below the Main Window) that contains the Errors tab showing the results of the latest check for well-formedness or validation, the XPath Results tab containing clickable links to the nodes corresponding to the query entered in the XPath query field at the top of the Editor, the Bookmarks tab containing clickable links to all defined bookmarks and the Find In Files results tab.
- The Controller Window (to the left of the Main Window) that contains the Projects tree view, the Navigator which displays a tree view of the nodes in the current document that can be filtered by Namespace or using an XPath query, and the Helpers tab that provides a means of easily adding elements and attributes in the active document. The Controller Window also contains a collapsible Document Properties window at the bottom.

Other components include the General Toolbar and the XPath Query field.

## Projects



**Figure 2. Projects**

The first tab in the Controller Window (to the left of the Main Window) contains the Projects view. Projects are used for grouping related documents and facilitate the use of batch operations such as checking for well-formedness and validation across a number of files.

## Navigator

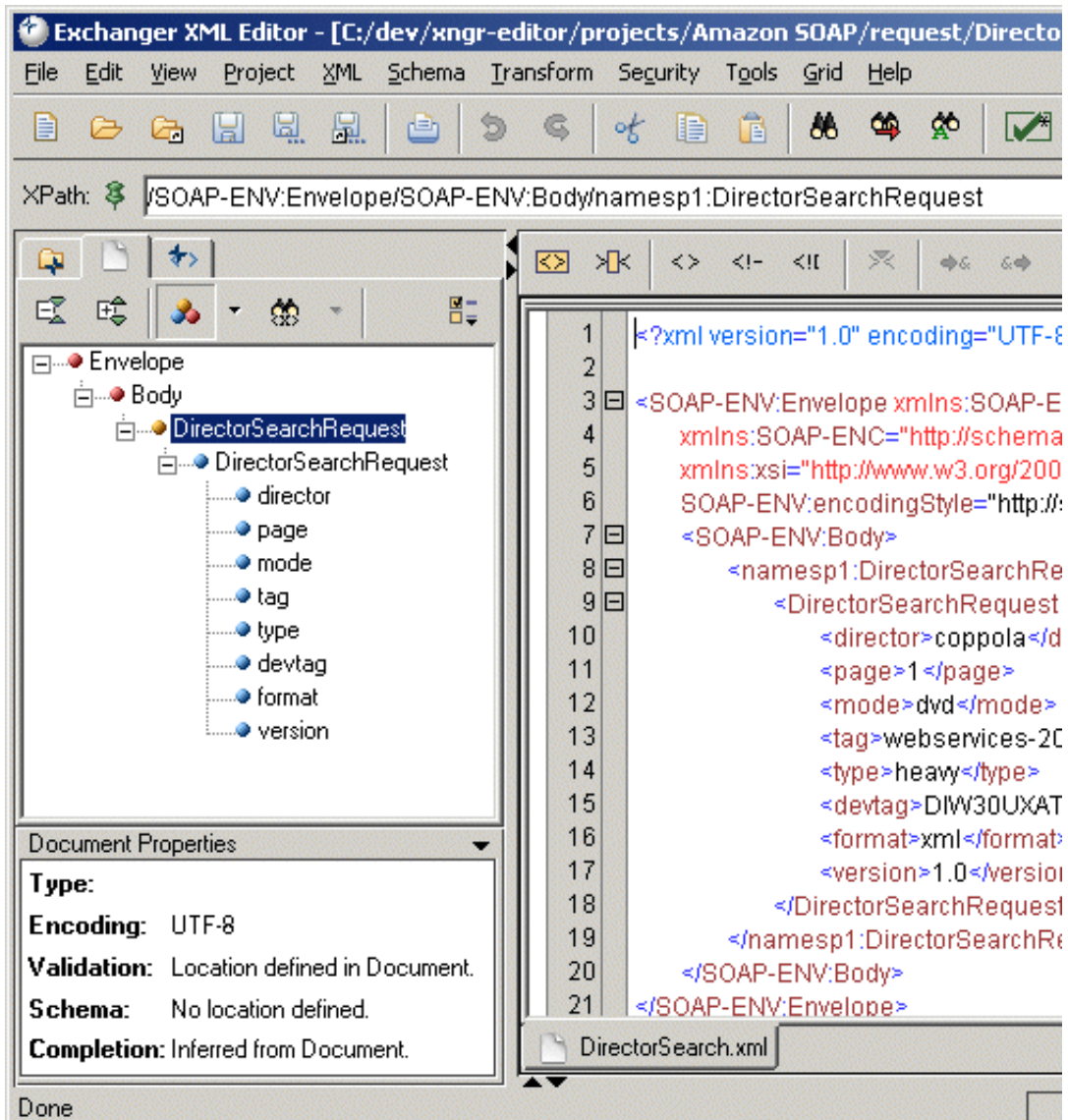



Figure 3. Navigator using Namespaces

The second tab in the Controller Window (to the left of the Main Window) contains a Navigator that can be used to traverse the content in the editor (or outliner). The tree is updated whenever the current document is saved or checked for well-formedness. By default, the navigator shows all element nodes in the document, with colored icons used to differentiate elements from different namespaces. Customized views can be created by filtering based on Namespace or XPath. Clicking on the Namespace button  causes element nodes in all namespaces to be displayed, but

specific namespaces can be chosen by clicking on the drop-down button to the right of the Namespace button and choosing from the list displayed.

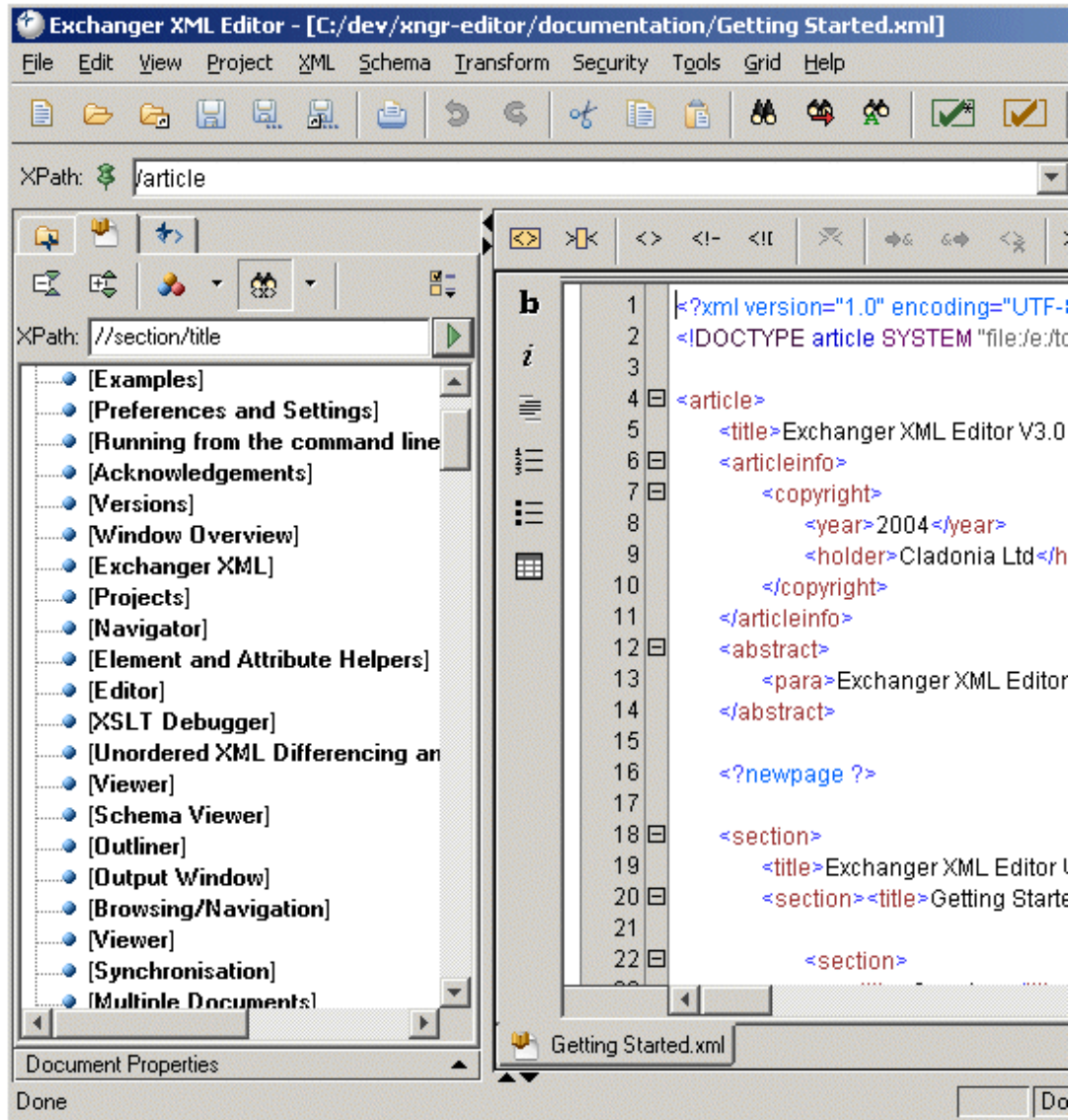




Figure 4. Navigator using XPaths

Click on the XPath Filter button  to specify the subset of nodes you would like to see in the

navigator. By default, only elements are displayed in the navigator but it is possible to turn on/off the display of element names, element content, attribute names and attribute values in the Navigator Properties dialog by pressing the preferences dropdown .

In the above example, a simple but effective table of contents has been generated for the input file based on section titles. Similar lists of figures, tables, etc could easily be used to greatly improve navigation in large documents.

## Element and Attribute Helpers

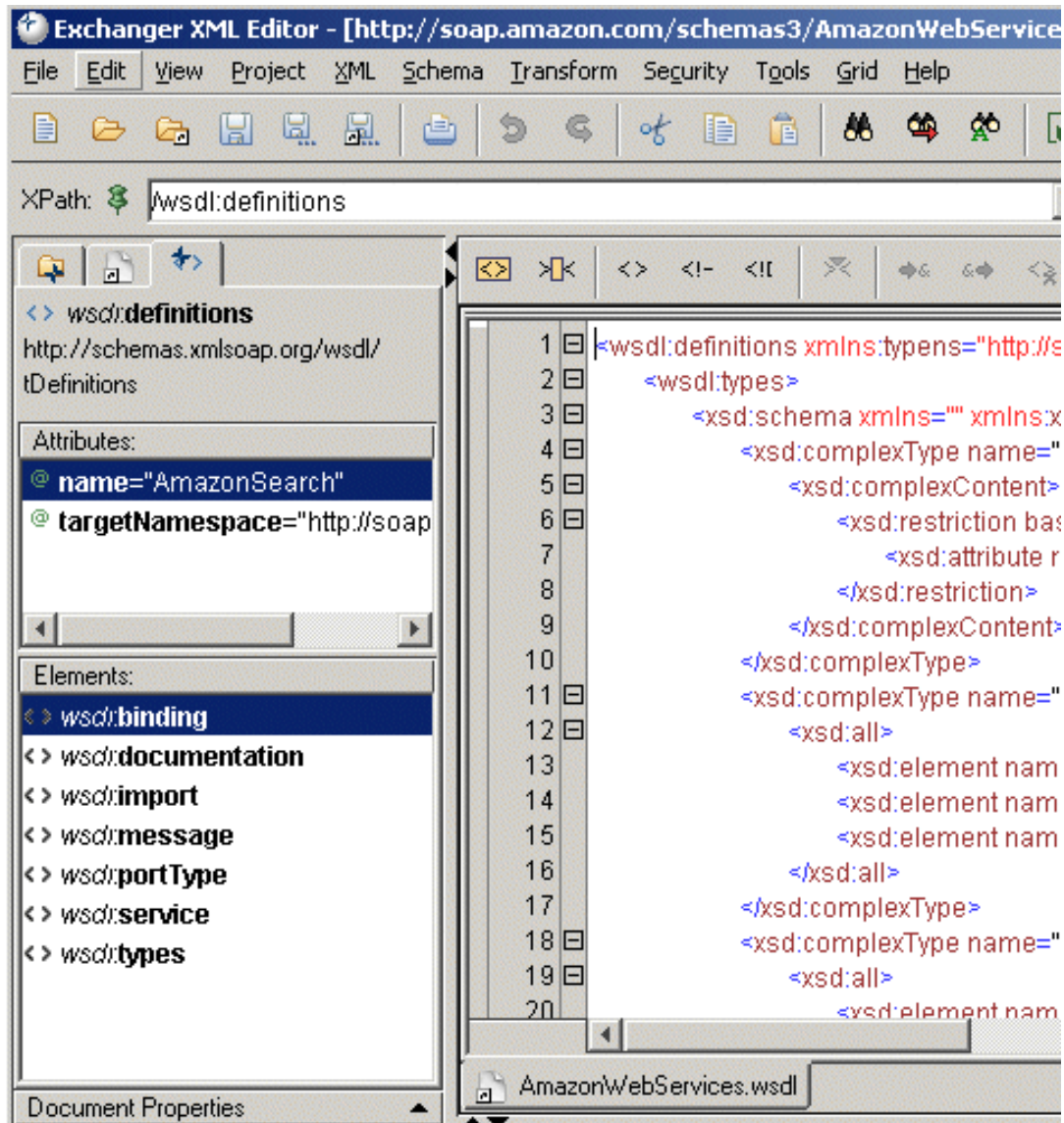


Figure 5. Element and Attribute Helpers

The third tab on the left hand side of the editor contains helpers that can be used to easily add elements and attributes in the editor, outliner or grid.

## Editor

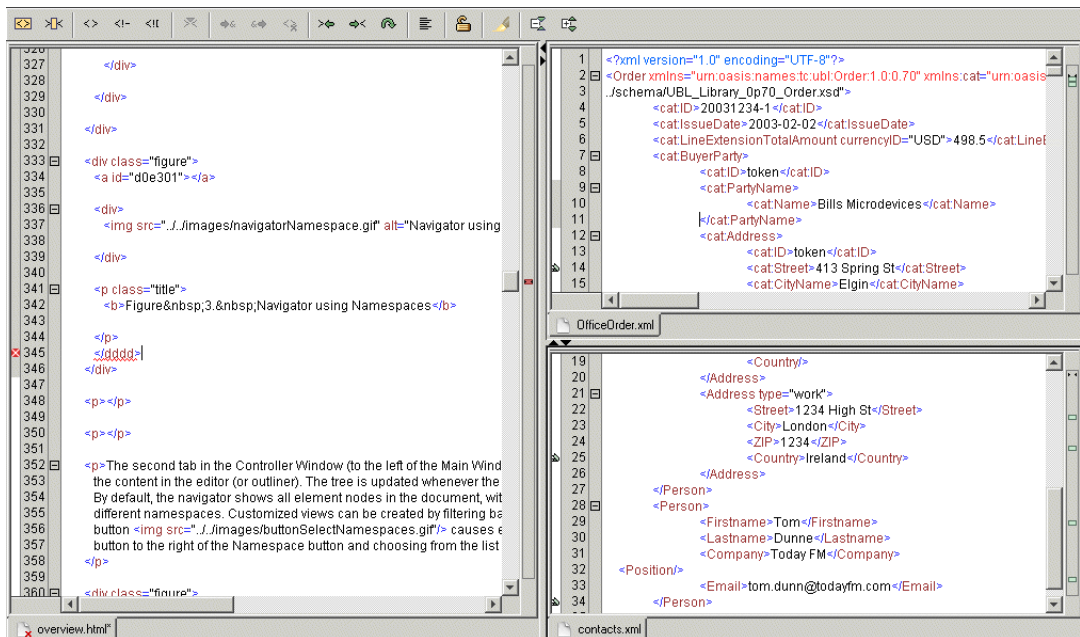


Figure 6. Editor

The Editor Window contains the core functionality of the Exchanger XML offering, including Tag Prompting, Syntax Highlighting, Refactoring, Find and Replace supporting XPath and Regular Expressions, etc. The Editor Toolbar at the top of the Editor Window provides quick access to various features such as Select Element Content, Add Comment, Split Element while all functions are available using customizable keyboard short-cuts. Margins for Bookmark creation, Line Numbering and Content Folding are placed on the left of the Editor pane, while on the right is the Overview margin, giving a document-wide view of Bookmark and Syntax Error locations.

## Grid

<>	orderID	orderDate	type
Order	DO1234	2005-03-09	new

/Order			
<>			
OrderHeader			
/Order/OrderHeader			
<>	currency		description
Total	USD	2.68	
Tax	USD	0.19	Sales Tax
Payment			
BillingAddress			

/Order/LinItems			
<>	description	quantity	requestedDeliveryDate
LinItem	Sprocket	2	2005-03-12
LinItem	Widget	5	2005-03-25

/Order/LinItems/LinItem[2]					
<>	description	trackingDomain	trackingId	currency	cost
ItemDetail					
ShippingAddress					

/Order/LinItems/LinItem[2]/ShippingAddress					
<>					
DeliverTo	Tom Jones				
DeliverTo	Mailstop M-543				
Street	123 Main Street				
City	Freemont				
State	CA				
PostalCode	90210				
Country	United States				

ShippingInfo	FedEx 2-day	FedEx	1234567890	USD	2.5
LinItem	Hammer	3	2005-04-21		

Figure 7. Grid

The Grid facilitates tag-free editing of XML data. The user can control grid features using the **View->Grid Properties** menu.



## XSLT Debugger

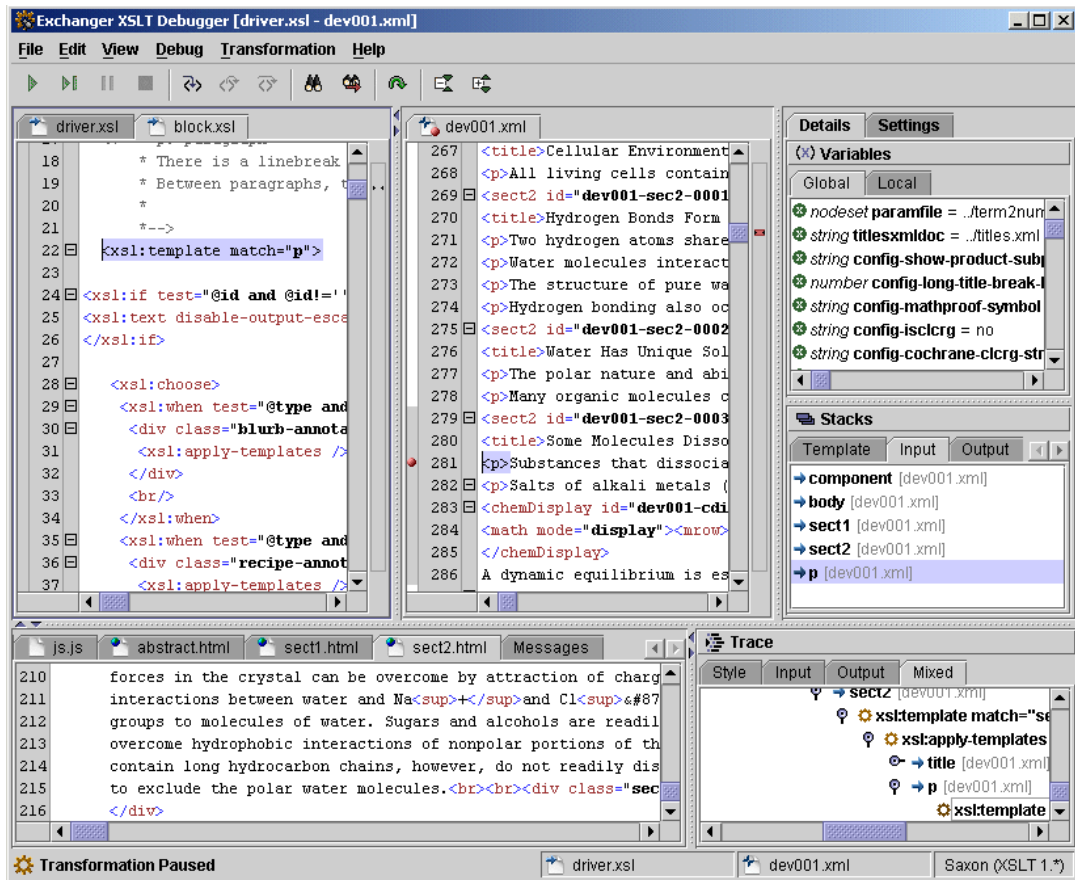


Figure 8. XSLT Debugger

The XSLT Debugger runs in its own window and displays multiple stylesheet files and multiple input files above one or more output files that are generated as a result of the transformation. Information about the current transformation is displayed on the right-hand side of the screen, including names, values and types for global and local variables, call stacks for templates, input and output data and traces for stylesheets, input and output data.

## Unordered XML Differencing and Merge

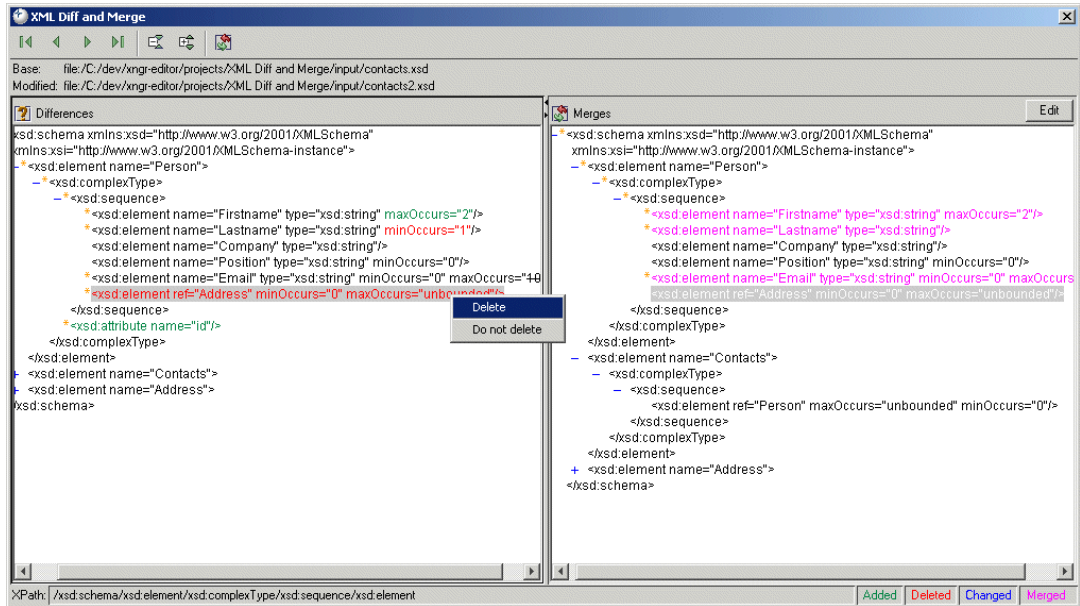


Figure 9. XML Diff and Merge

The Unordered Diff tool runs in its own window and compares two input files and shows additions, deletions and modifications in different colors in a popup window. Changes between the base file and the modified file can be merged, one at a time, and the newly created document can be opened in the editor.

## Viewer

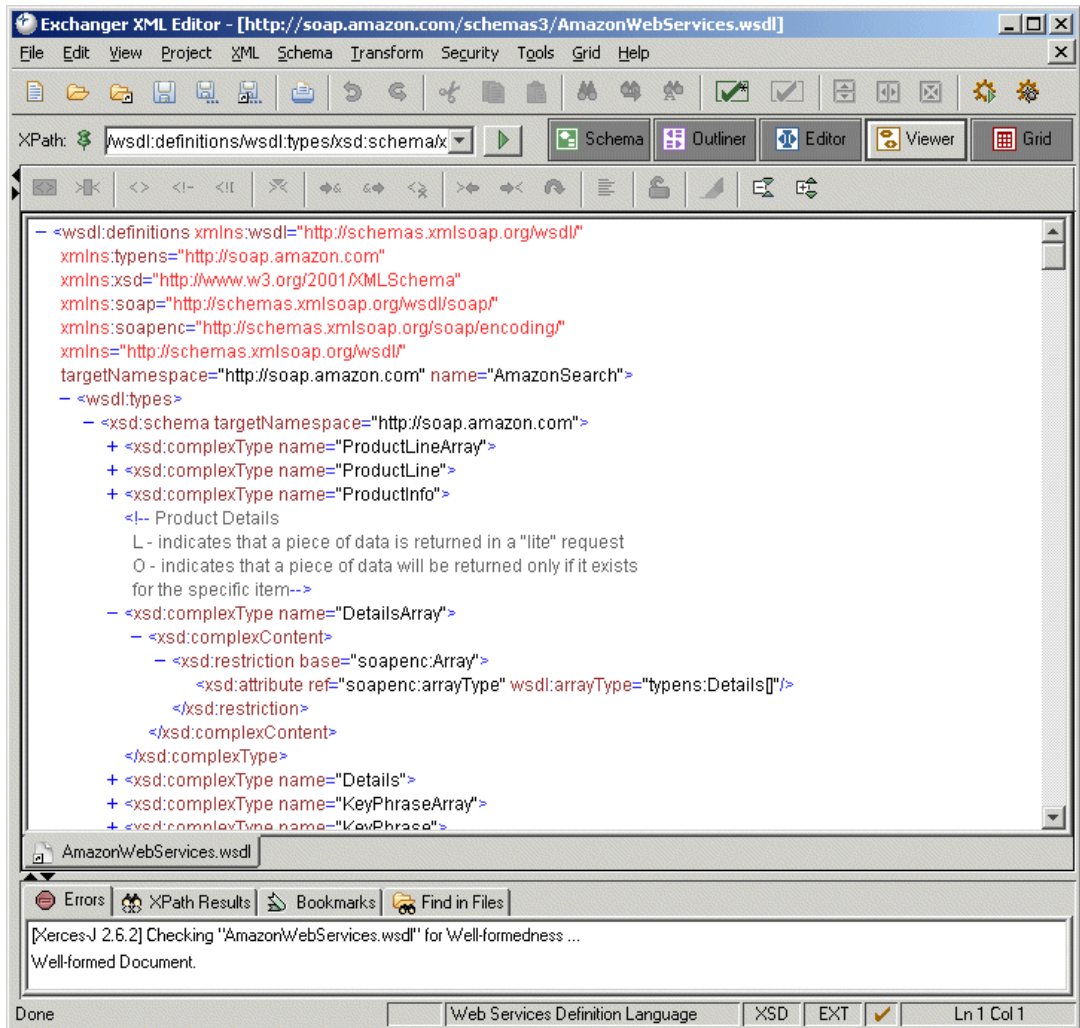


Figure 10. Viewer

The Viewer displays a tree-view of the current document - the user can control the display of element content, attributes, comments, namespaces etc in the **View->Viewer Properties** menus.

## Schema Viewer

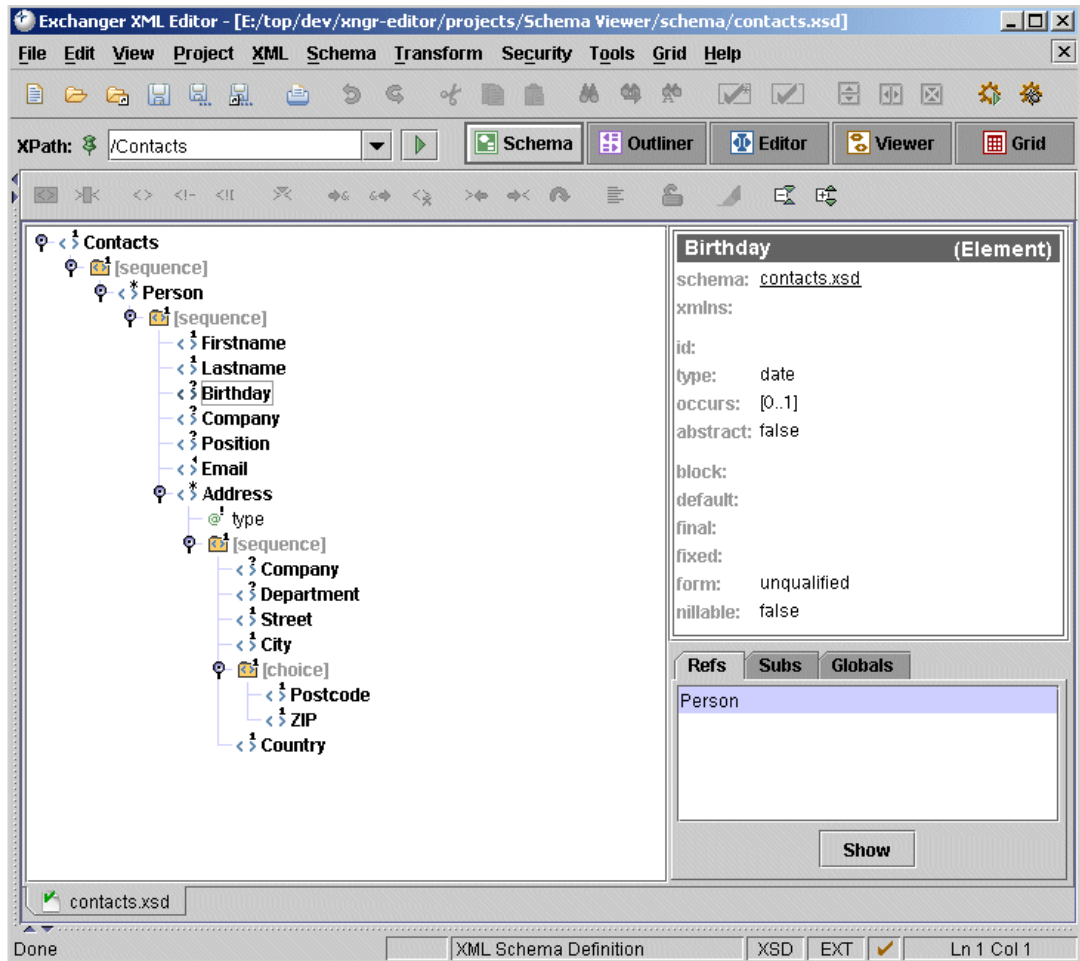


Figure 11. Schema Viewer

The Schema Viewer presents a tree view of the schema associated with the current active document. When the Schema Viewer is active, the details of the current schema item are displayed to the right of the schema tree.

## Outliner

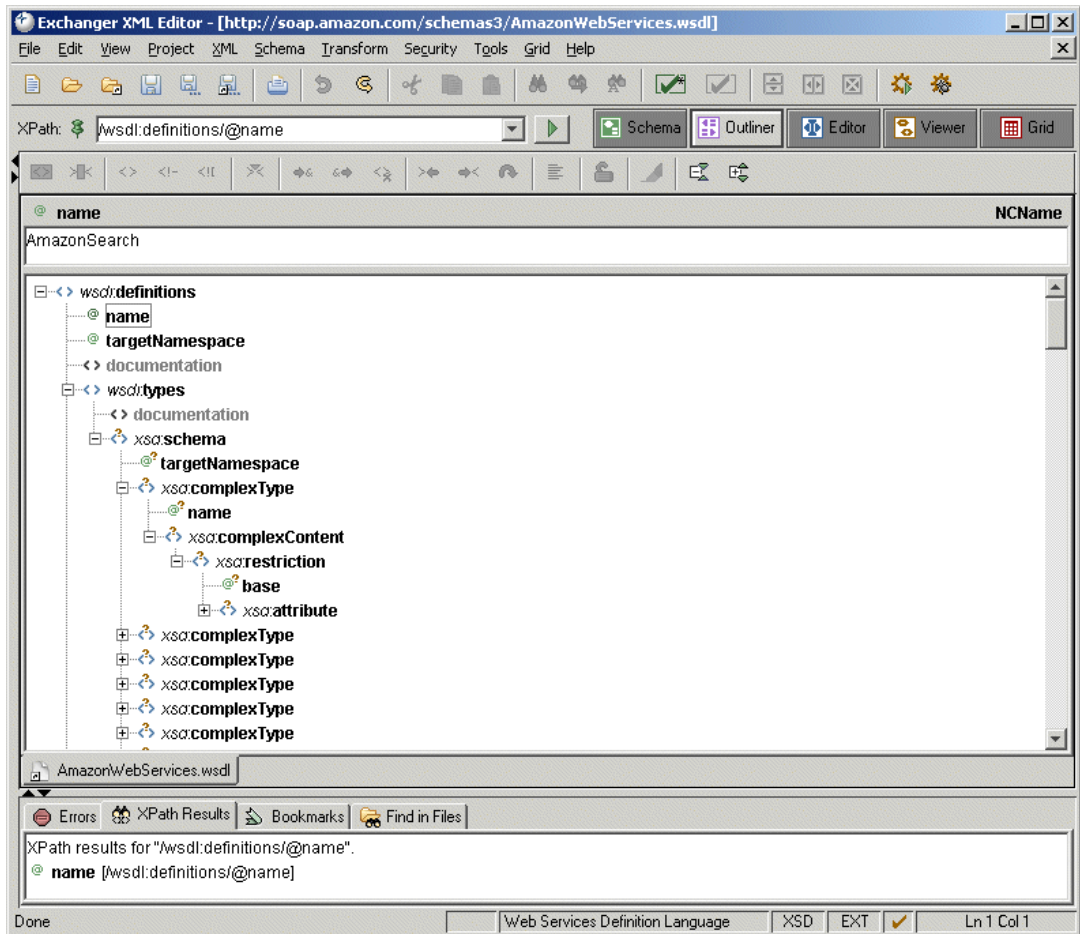


Figure 12. Outliner

The Outliner facilitates the tag-free editing of XML data.

## Output Window

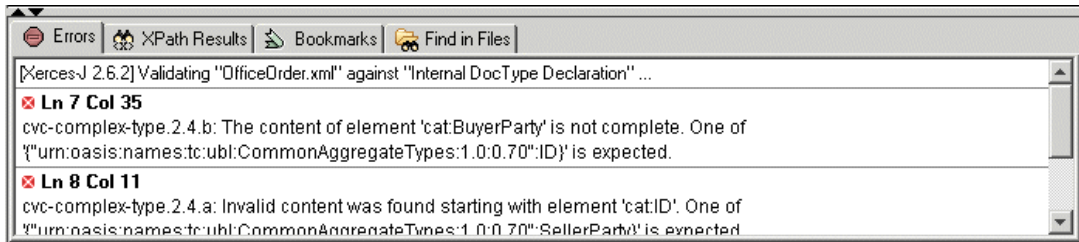


Figure 13. Errors

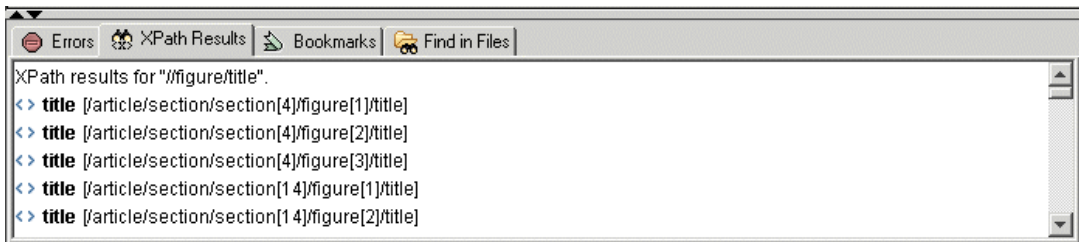


Figure 14. XPath Results

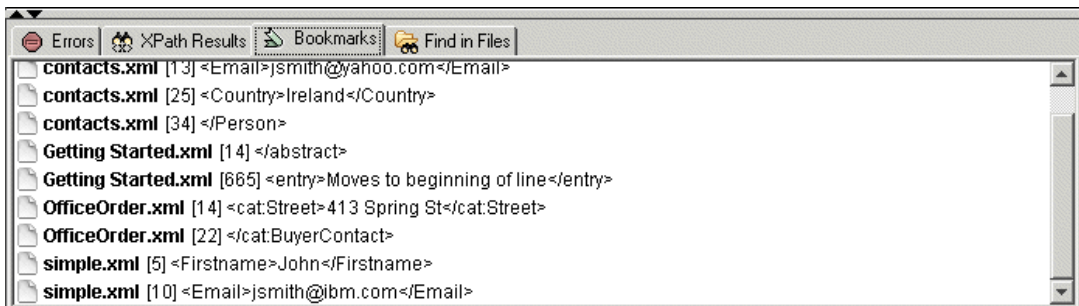


Figure 15. Bookmarks

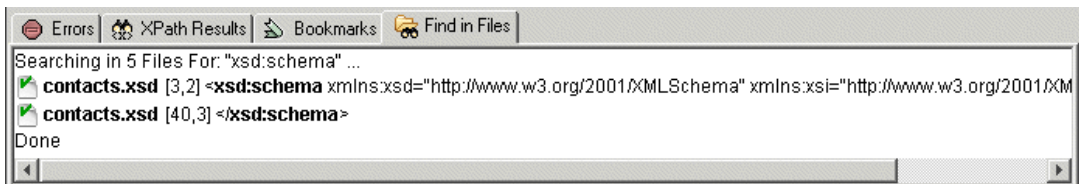


Figure 16. Find in Files

The Output Window contains separate tabs for Errors, XPath Results, Bookmarks and Find in Files results. Clicking on the contents in the output window will take you to the corresponding position in the Editor Window.

